

## Seasonal rainfall situation (% Departure from normal) in India (June 1-August 15, 2012)

S. No	Meteorological Sub Division	(June - Sep) Normal	01-07 Jun 2012	01-28 Jun 2012	01. Jun - 05.Jul 2012	01. Jun - 19.Jul 2012	01. Jun - 26.Jul 2012	01. Jun - 02.Aug 2012	01. Jun - 09.Aug 2012	01. Jun - 10.Aug 2012	01. Jun - 11.Aug 2012	01. Jun - 12.Aug 2012	01. Jun - 13.Aug 2012	01. Jun - 14.Aug 2012	01. Jun - 15.Aug 2012	* Jun 01 – Aug 15 2012	
																ACT (mm)	NOR (mm)
1	And & Nic Islands	1683	8	5	-2	7	-3	-9	-16	-17	-17	-16	-16	-17	-17	861.8	1039.3
2	Arunachal Pradesh	1768	54	12	2	-2	-4	9	7	7	6	5	4	3	2	1229.6	1205.2
3	Assam & Meghalaya	1793	47	21	3	13	8	4	1	0	-1	-1	-2	-3	-3	1217.5	1257.3
4	Nag, Mani, Miz, Trip	1497	53	-2	-14	-23	-20	-21	-19	-20	-19	-17	-19	-19	-18	833.6	1018.3
5	S.W.Bengal & Sikkim	2006	1	34	16	31	23	14	10	9	7	7	6	5	4	1396.7	1346.5
6	Gangetic W.Bengal	1168	-82	-37	-44	-27	-27	-24	-25	-24	-21	-20	-20	-18	-18	602.9	739.6
7	Orissa	1150	-87	-17	-12	-19	-14	-13	-6	-5	-4	-3	-4	-5	-6	694.3	736.8
8	Jharkhand	1092	-93	-18	-41	-25	-19	-17	-13	-11	-10	-10	-11	-6	-5	667.3	699.9
9	Bihar	1028	-14	-38	-52	-16	-15	-23	-19	-19	-20	-21	-20	-20	-20	526.9	655.7
10	East Uttar Pradesh	898	-94	-72	-78	-32	-12	-17	-11	-12	-13	-14	-16	-15	-18	457.8	558.7
11	West Uttar Pradesh	769	-82	-88	-90	-58	-48	-33	-32	-30	-31	-31	-32	-33	-34	319.1	484.9
12	Uttarakhand	1229	-61	-69	-41	-38	-31	-28	-16	-16	-18	-17	-17	-17	-17	680.2	824.0
13	Harya, Chand & Delhi	466	-43	-90	-93	-70	-70	-71	-68	-67	-67	-65	-65	-66	-66	103.7	302.8
14	Punjab	492	-24	-74	-85	-70	-66	-66	-68	-68	-67	-68	-67	-66	-63	122.0	329.8
15	Himachal Pradesh	825	-58	-68	-58	-50	-47	-38	-38	-38	-37	-38	-39	-38	-37	353.6	564.2
16	Jammu & Kashmir	535	-9	-29	-32	-30	-35	-30	-26	-27	-28	-29	-29	-24	-23	280.4	364.9
17	West Rajasthan	263	-19	-77	-85	-58	-64	-67	-60	-60	-57	-53	-49	-40	-29	127.1	178.4
18	East Rajasthan	616	-88	-72	-67	-24	-37	-37	-32	-30	-27	-22	-16	-10	-7	375.7	405.5
19	W. Madhya Pradesh	876	-90	-64	-50	-31	-22	12	17	11	19	20	22	23	22	675.5	554.0
20	E. Madhya Pradesh	1051	-94	-48	-50	-18	-6	-2	0	3	6	6	5	4	1	688.8	679.3
21	Gujarat region	901	-98	-72	-69	-49	-54	-57	-59	-58	-57	-54	-47	-44	-43	347.5	612.7
22	Saurashtra & Kutch	474	-100	-72	-68	-73	-77	-80	-81	-82	-82	-82	-82	-81	-81	63.3	341.1
23	Konkan & Goa	2914	-48	-13	-3	-7	-13	-14	-13	-13	-12	-13	-13	-14	-14	1922.1	2247.6
24	Madh. Maharashtra	729	-69	-52	-36	-39	-37	-26	-24	-22	-21	-20	-20	-21	-21	387.0	490.9
25	Marathwada	683	-88	-59	-39	-29	-28	-31	-35	-36	-36	-37	-37	-38	-39	254.7	415.3
26	Vidarbha	955	-90	-25	-31	-20	-5	2	-1	-3	-2	-3	-3	-5	-6	604.7	641.1
27	Chhattisgarh	1147	-90	-17	-25	-17	-7	-4	6	5	7	6	6	4	3	781.8	759.2
28	C. Andhra Pradesh	581	-96	-18	-19	6	4	2	10	12	13	13	13	12	10	374.2	339.2
29	Telangana	755	-51	-10	-10	-3	9	8	9	8	8	8	6	5	4	506.1	486.2
30	Rayalaseema	398	-75	-48	-43	10	2	-1	-2	-3	-4	-5	-6	-6	-7	194.3	209.7
31	T.Nadu&Pondicherry	317	-83	-55	-44	-2	-18	-26	-25	-25	-26	-25	-27	-25	-21	117.8	149.0
32	Coastal Karnataka	3084	-32	-12	-8	-21	-22	-24	-15	-13	-12	-8	-8	-9	-9	2241.8	2466.0
33	North int. Karnataka	506	-77	-46	-44	-38	-33	-34	-32	-32	-31	-31	-30	-31	-32	205.4	300.7
34	South int. Karnataka	660	-74	-51	-47	-50	-45	-44	-32	-30	-29	-28	-28	-28	-29	315.3	445.5
35	Kerala	2040	-44	-31	-31	-38	-39	-43	-40	-39	-38	-37	-37	-37	-37	1012.9	1606.5
36	Lakshadweep	999	25	-1	-5	4	-6	-12	-13	-11	-11	-7	-7	-4	0	721.5	721.6

### Regional rainfall situation (June 1- August 15)

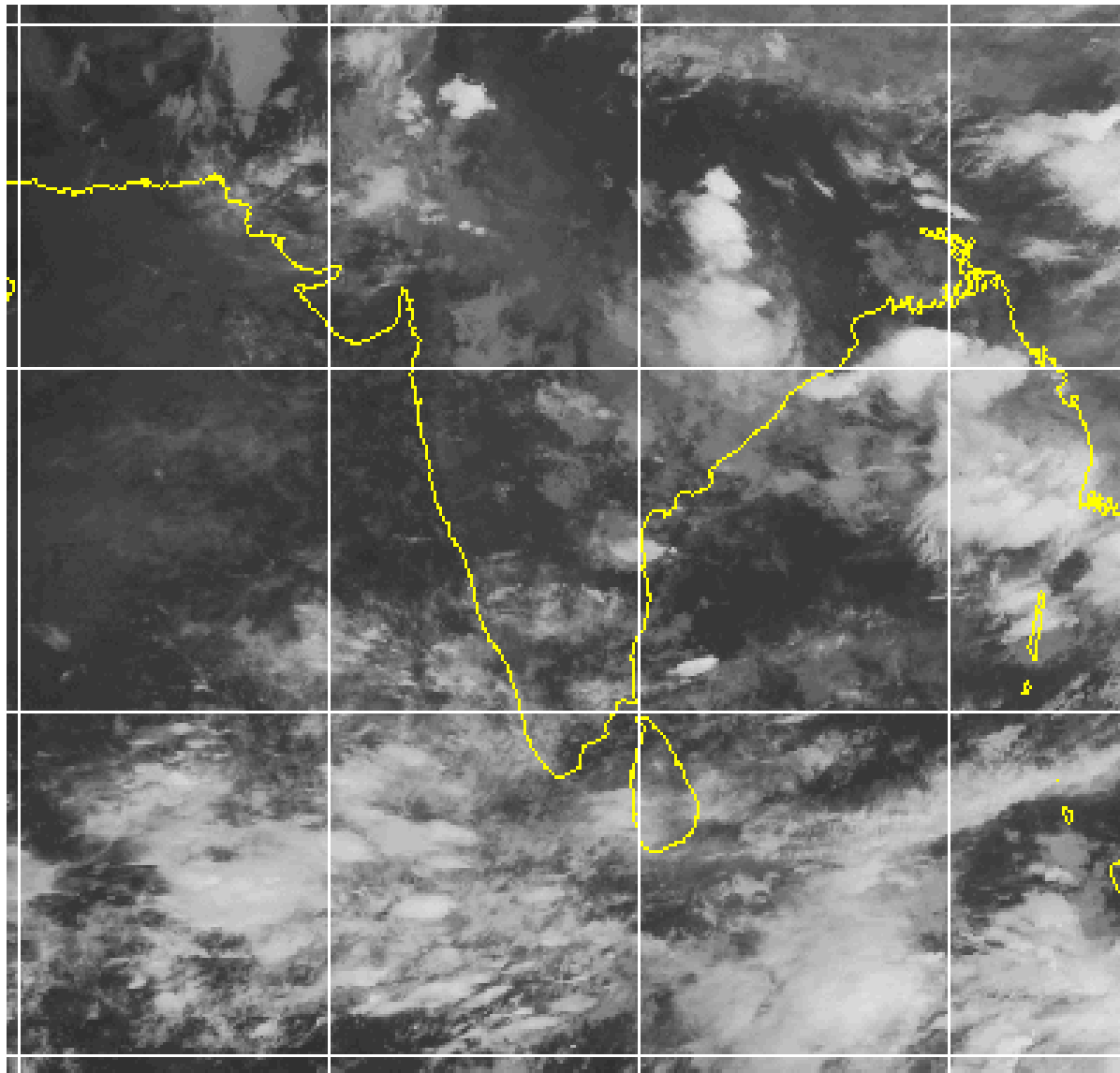
COUNTRY AS A WHOLE	-15
NORTH WEST INDIA	-25
CENTRAL INDIA	-10
SOUTH PENINSULA	-18
EAST & NORTH EAST INDIA	-13

#### LEGEND:

Excess: (+20 or more)	Blue
Normal:(+19 to -19)	Green
Deficient:(-20 to -59)	Pink
Scanty:(-60 to -99)	Yellow
No Rain:(-100)	White

- Heavy rains continued in Rajasthan particularly in Western Rajasthan causing flooding in few areas
- Situation in North Gujarat also improved with continuous rains
- Scattered rains in Punjab in several districts brought down temperatures and water demand for paddy
- Saurashtra & Kutch remained dry

\*These bar diagrams have been prepared based on the data supplied by IMD.



Source: <http://www.tropmet.res.in/~kolli/mol/Monsoon/frameindex.html>